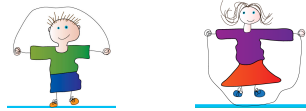


Central Bedfordshire Safeguarding Children Board Annual Report 2010 - 2011

Central Bedfordshire Safeguarding Children Board

Working together to safeguard children



Contents

Preface	Page 3
Introduction from Maggie Blyth, Independent Chair Central Bedfordshire Safeguarding Children Board	Page 4
Living in Central Bedfordshire	Page 5
The Strategic Priorities for 2010 -2011	Page 7
Governance and accountability arrangements	Page 12
Monitoring and evaluation/quality assurance activity	Page 13
Priorities for 2011 – 2012	Page 16
Appendices outlining the Activity and progress reports of the CBSCB agencies:	
Appendix 1: Central Bedfordshire Council – Children Social Care	Page 19
Appendix 2: LSCB Training	Page 23
Appendix 3: Bedfordshire Probation	Page 24
Appendix 4: Bedfordshire Police	Page 25
Appendix 5: Bedfordshire Community Health Service	Page 26
Appendix 6: The Voluntary Organisations for Children, Young People & Families	Page 28
Appendix 7: NHS Bedfordshire	Page 29
Appendix 8: South Essex Partnership Trust (SEPT)	Page 30
Appendix 9: Bedford Hospital	Page 35
Appendix 10: Safeguarding Outturns April 09 – March 2010	Page 39
Appendix 11: Partner members attendance at Strategic Board meeting 2010-2011	Page 40
Appendix 12: Income for 2010/2011	Page 42
Appendix 13: Protocol agreement between Central Bedfordshire Children and Young People’s Trust Board and Central Bedfordshire Safeguarding Children Board	Page 43
Appendix 14: Glossary of Terms	Page 45

Preface

The Apprenticeship, Skills, Children and Learning Act 2009 introduced a requirement for Local Safeguarding Children's Board (LSCB) and publish an annual report on the effectiveness of child protection in the local area. The report should provide an assessment of the effectiveness of local arrangements to safeguard and promote the welfare of children, set against a comprehensive analysis of the local area child protection context. It should recognise achievements and the progress that has been made in the local authority area, as well as providing a realistic assessment of the challenges that still remain. (Working Together 2010, para 3.34)

The report should demonstrate the extent to which the functions of the LSCB as set out in Working Together are being effectively discharged. This should include assessments of policies and procedures to keep children safe, including:

- The policies and procedures for the safe recruitment of frontline staff.
- An assessment of single and interagency training on child protection and promoting the welfare of children to meet the local needs;
- Lessons learnt about the prevention of future child deaths which have been identified by the Child Death Overview Panel (CDOP)
- Progress on priority areas (e.g. child trafficking, sexual exploitation and domestic violence).

Annual reports should also include a clear account of progress that has been made in implementing action from Serious Case Reviews (SCR) completed during the year in question and plans to evaluate the impact of these actions and to monitor how these improvements are sustained over time. Where SCRs have been commissioned but not completed the annual report should note action already taken to learn lessons arising from the relevant cases. Common themes and recurring recommendations may be addressed together but the report must be clear on action taken in response to individual SCRs. The Child J SCR referred to in this report came to the attention of the Bedfordshire Safeguarding Children Board because of concerns relating to Child J up until the middle of 2009. The SCR was completed in April 2010 and discussed in the Board's 2009/10 Annual Review. Some parts of the action plan from that SCR continued to be implemented in the 2010-11 year and this is why it also features in this review. All recommendations from the SCR have now been addressed.

The report should provide robust challenge to the work of the Children's Trust Board in driving improvements in the child protection of children and young people and in promoting their welfare.

The Central Bedfordshire Children Board has been working hard to ensure that children's protection has remained a high priority for the council and its partners. This annual report outlines the activity and interventions carried out by the Council and its partners to secure children's safety and manage their circumstances in a safe and effective manner.

Introduction

In May 2011 the independent review of the child protection system in England concluded. While Government has yet to respond to Munro's 15 recommendations, Central Bedfordshire Safeguarding Children Board (CBSCB) has already put in place a number of measures during the last year to strengthen the scrutiny aspect of its statutory function. The focus of the board is to deliver continuous improvement for the most vulnerable children and young people at risk.

Our four strategic priorities for the last year have been achieved and new systems across the partnership in Central Bedfordshire have focused on identifying and supporting children at risk of abuse or neglect. This has included a critical review of our multi agency referral arrangements, ensuring that every child has the right response at the right time and ensuring swift learning from our first Serious Case Review (CSR), Child J.

Our other objectives during the year included embedding our performance framework, focusing on outcomes for children and young people, exploring collaborative arrangements with other Local Safeguarding Children Board (LSCB)'s, developing anti bullying strategies and developing a better understanding of the impact of domestic abuse.

All agencies are committed to making a difference to the lives of children and young people in Central Bedfordshire and will continue to build upon our foundations and achievements to date.

The CBSCB Annual Report emphasises the importance of the scrutiny role of LSCB's strengthened in recent recommendations from the independent Munro Review at national level.

The next year will require visible leadership and challenge from all members of the Board. I am grateful for the continued commitment from statutory and voluntary sector partners in Central Bedfordshire in their commitment to child protection improvements. We will report on progress again in September 2012.

Maggie Blyth, Independent Chair
Central Bedfordshire Safeguarding Children Board

Living in Central Bedfordshire

Central Bedfordshire is home to approximately 252,900 people. Around 130,200 people (51.5% of the population) live in the larger towns with 37,000 in Leighton Linlade, 35,120 in Dunstable, 16,670 in Houghton Regis, 16,420 in Biggleswade, 13,370 in Flitwick and 11,620 in Sandy (figures based on Bedfordshire population model forecasts for 2009).

Around 62,000 children and young people between the ages of 0-19 live in Central Bedfordshire and by 2021 it is forecast that there will be about 2,000 more children aged under 16. The number of births in Central Bedfordshire has been around 3,000 for the last three years but has shown an increase between 2003 and 2008 in line with the national trend.

Age range of children and young people population in Central Bedfordshire, 2009

0 – 4	15,800
5 – 9	15,200
10 – 14	15,600
15 - 19	15,500

*ONS – estimates June 2009

Central Bedfordshire is generally an affluent area and many children and young people in the area enjoy a very good quality of life and have good prospects in relation to both their own future happiness and their contribution to their communities. National performance measures show almost all outcomes are in line with or above the averages for England or similar areas (Annual Children's Services Assessment 2010).

The health of these children and young people compares well with the East of England, and England as a whole. Improvements have been made to the provision of mental health services and more young people report that they have good relationships with friends and family than found nationally. The emotional and behavioural health of children in care is good. More children say they enjoy access to parks and play areas than is the case elsewhere. Levels of obesity among 5 and 11 year olds are low; however local data show that obesity rates are rising for the older group. The number of young women under the age of 18 who become pregnant is falling at a faster rate than nationally, although locally agreed targets for the last year were not met. Fewer 16 year olds reported that they had recently been drunk or taken drugs in 2010 than in 2009 (Annual Children's Services Assessment 2010).

Arrangements for keeping children and young people safe are almost always good and Ofsted inspections of childminders, schools, colleges and children's homes confirm this. The unannounced inspection of frontline child protection services in May 2010 identified a number of strengths in the arrangements for supporting families whose circumstances make them more vulnerable. Fewer young people report feeling bullied than elsewhere. The youth offending service performs well against the national indicators relating to first time offenders and re-offending rates.

Almost all child carers and nursery, primary and special schools are good at helping children and young people to do well and enjoy learning. However our upper schools and colleges are not as good, with a third judged to be only adequate. Children achieve the standard expected of them by the time they start school. However, whilst at lower school, fewer children make progress at the expected rate and results in national tests are not as good as those in similar areas. Examination results for 16 year olds are similar to the national picture but not as good as those in similar areas, with far fewer obtaining two or more high grades in science than elsewhere.

Those from low income families make good progress in upper schools, and by the age of 16 the gap between achievement and their peers is not as wide as elsewhere. However young people with special educational needs do not do as well in upper schools as similar groups nationally. Behaviour is usually good in upper schools and the number of pupils who are often absent from school is well below the national average.

Most young people receive good support in schools and colleges to gain the skills and qualifications needed for future jobs. The number achieving good qualifications at 19 years of age is in line with national figures although below similar areas, which means that not all young people of this age are doing as well as they could be. Not as many 19 year olds from low-income families in Central Bedfordshire gain the higher level 3 qualifications as those from similar areas, but there is good progress in the number gaining level 2 qualifications (Annual Children's Services Assessment 2010).

Although it is clear that most children and young people in Central Bedfordshire do well, we know that there is a significant minority of children and young people for whom outcomes are much worse than those of the rest.

In terms of overall deprivation, in 2007 none of the areas in Central Bedfordshire were in the top 20% most deprived in England. However, for some individual aspects of deprivation (such as education, crime and income) communities in Dunstable, Houghton Regis and Sandy do fall into the worst 10% nationally.

Central Bedfordshire has 12.1% of its children living in poverty. This statistic is based on the most up to date figures available from Her Majesty's Customs and Revenue (HMRC) and relates to the year 2008-2009. This figure masks some high levels of poverty within particular areas and the five areas with the highest levels of poverty are:

•Tithe Farm	31.4%
•Parkside	27.1%
•Manshead	25.6%
•Northfields	24.8%
•Houghton Hall	22.9%

There are smaller local areas which for statistical purposes are called local super output areas (LSOA). Those with the highest IDACI score (Income Deprivation Affecting Children Index) are in the wards of Manshead, Tithe Farm, Houghton Hall, and Parkside and these are in the highest 10% of LSOAs in the East England and within the worst 20% in England.

The Index of Multiple Deprivation (IMD) is a basket of indicators including employment levels, health and disability, education skills and training, housing issues, crime and disorder and the living environment. The most recent IMD shows that the highest levels of deprivation based on these indicators are in Parkside, Manshead, Tithe Farm, and Northfields.

Whilst there is clearly a concentration of poverty and deprivation across the areas within Dunstable and Houghton Regis there is no ward in Central Bedfordshire which does not have some child poverty and levels of deprivation. The isolating effect of being a child in poverty in an area of relative affluence should not be underestimated. Furthermore areas within Flitwick, Sandy and Leighton Buzzard also have pockets of deprivation and poverty.

Head teachers in Central Bedfordshire tell us that

"There is a clear impact on the emotional development of children who are living in a "stressful" environment e.g. a household with debt problems"

"Education is often a low priority at home for households in poverty"

"It can be very isolating to be poor in an area of relative affluence"

"Some children will not be accessing the full curriculum e.g, school trips, cost of transport to swimming pools, because parents cannot afford this and do not wish to draw attention to this, so children are kept off school "

"Poor children will often have lower self-esteem"

“Some children will be unable to participate in after school activities”

“Some poor children will have poor attendance due to health problems “

1. The Strategic Priorities for 2010 - 2011

The Strategic Priorities for Central Bedfordshire Safeguarding Children Board in 2010 -2011 were :

1. Domestic Violence. *To ensure that children and young people in contact with adults who perpetrate domestic abuse are protected*

The key areas of progress/achievements in relation to these priorities with evidence of improved outcomes are;

- Funding was made available by Government Office East towards a re-launch of the Safe and Sound Education packs. The Bedfordshire Domestic Abuse Partnership successfully launched its Safe and Sound Education packs at an event on the 9th March 2011. The pack is available in the form of a CD Rom and it can be used by Lower, Middle and Upper Schools to educate children and young people about healthy relationships.
- CBSCB has delivered three 1 day 'Impact of Domestic Abuse on the Child' courses in 2010/2011.
- CBSCB also promotes and assists with the applications for the MARAC training and the Domestic Abuse training via the Domestic Abuse Partnership.
- The Independent Chair will report annually to the Central Bedfordshire Children's Trust on the work of the CBSCB.

2. Sexual Abuse. *To ensure that children and young people are protected from sexual abuse and that agencies are able to recognise the dangers and risks presented by sexual perpetrators through an understanding of risk assessment procedures.*

The key areas of progress/achievements in relation to these priorities with evidence of improved outcomes are;

- Messages from the Child J SCR have been disseminated via all courses and specific seminars/workshops available to practitioners.
- A Jargon Busting tool has been developed and disseminated across the 3 LSCB's in Bedfordshire.
- The Protocol and Guidance "Working with Sexually Active Young People" has been revised and signed off by the CBSCB.
- The Protocol and Guidance "Working with Sexually Active Young People" has been adopted by Luton LSCB.
- An escalation procedure was developed and signed off by CBSCB in response to the findings in the Child J SCR that practitioners were slow to challenge each other's practice and decision making when child protection and the welfare of the children in the family were being considered.
- Central Bedfordshire Council Children's Services Commissioning Team have completed a review of the processes used in cases where there is an adult sex offender and have introduced a revised system which ensures that all providers of risk assessments of these offenders are checked against the quality standards and checks set out in their Commissioning Procedures checklist. This includes relevant inspection reports, Professional registration, References and CRB/Form F/Insurance and liability. Additionally mandatory guidance is issued to Independent Psychologists conducting assessments on behalf of Central Bedfordshire Council. The guidance sets out the required procedures and format for assessments undertaken on behalf of the council. As a result of this SCR the Department for Education have issued new guidance to all Directors of Children's Services.

3. E Safety and Anti Bullying. *To ensure that children and young people consider themselves safe and the risk of harm in relation to bullying is reduced. To empower children and young people to responsibly use communication and Information technologies and to equip parents, carers and organisations with information to fulfil their child protection responsibilities.*

The key areas of progress/achievements in relation to these priorities with evidence of improved outcomes are;

- Central Bedfordshire Council's Anti Bullying Strategy has been agreed and adopted by Stay Safe delivery group in July 2010.
- The strategy was published in 2010.
- Central Bedfordshire Council have conducted an e-Safety briefing where every school apart from 3 attended.
- Central Bedfordshire Council has provided schools with "e-Safeguarding: Creating Working Procedures in Schools" document available as an online activity on the National Education Network (NEN) website. This document is a result of work created by the e-Learning team and further developed by colleagues from the National Education Network. The flash activity will remember where you are in the process and give you helpful pointers to extra resources you might want or need to use in ensuring your school has e-Safety implemented.
- E-Safeguarding materials developed include model Acceptable Use Policies for schools to develop/implement, now adopted and developed by National Education Network (NEN) as an online tool to advise and assist schools in implementing e-Safety/e-Security policies.
- All but three schools attended briefing sessions (as above) to keep e-Safeguarding a high priority and to refer schools to the National Education Network.
- Central Bedfordshire Council have launched e-Safety working procedures and have developed and promoted e-Safety materials via NEN/ Acceptable Use Policies.
- Cyber mentoring successfully launched and implemented in eight Central Bedfordshire schools from Middle and Upper covering the four Central Bedfordshire areas. Approximately 200 students trained as Cyber Mentors. Funding is available for four more schools to take part in the Cyber Mentor programme. A Mini Mentor programme will start in January/February which will include KS1 and 2.

4. Creation of Effective LSCB. *To ensure that arrangements are in place to create a new co-ordinated and effective LSCB.*

The key areas of progress/achievements in relation to these priorities with evidence of improved outcomes are;

- CBSCB members agreed and signed of a constitution in June 2010.
- CBSCB members signed off the Business Plan in June 2010.
- Development and ongoing maintenance of a dedicated LSCB website.
- Members of the Central Bedfordshire Children's Trust Board have been provided with a copy of the Annual Report of the previous Bedfordshire LSCB for information.
- The first recommendation from the Child J SCR was that the Central Bedfordshire Council should engage with schools in a review of how it enables and supports head teachers to ensure that there is appropriate representation at all Section 17 (Child in Need) and Section 47 (Child in Need of Protection) meetings. Central Bedfordshire Council has included this issue in half day courses for Designated Persons and through twilight training sessions.
- The second recommendation involves Central Bedfordshire Council placing an expectation on head teachers that if, due to unforeseen and exceptional circumstances, a school is unable to attend a Section 17 or Section 47 meeting, it should make a written submission. Again, this issue is being included in half day courses for Designated Persons and through twilight training sessions. Many schools already ensure that they attend all Child in Need/Child in Need of Protection meetings and if due to unforeseen and exceptional reasons they are unable to do so, make a written submission. Further discussions will be initiated to ensure that school representation at meetings is maintained during school holiday periods. The above will be part of a briefing for all Head teachers at meetings in October.

The 7 objectives set out below support the implementation of the four core priorities :

1. To promote child protection for children in Central Bedfordshire

- All agencies completed their s11 self evaluation in Nov 2009.
- All those agencies that self assessed as being less effective in any of the Section 11 standards presented their updated Action Plans in March 2011.

2. To continue to develop the CBSCB functions and arrangements in line with the LSCB's extended role

- The Lay Member recruitment process is being discussed at Strategic Board level.

3. To ensure that a comprehensive, set of multi-agency policies, practice and guidance is available to all staff working with children across Central Bedfordshire.

- The Interagency child protection procedures have been reviewed & amended to reflect the updated Working Together 2010 guidance - http://www.proceduresonline.com/bedford_scb/
- The Interagency child protection procedures have been revised in partnership with Bedford Borough, Central Bedfordshire, Peterborough and Cambridgeshire LSCB's to enable consistent child protection procedures across LA boundaries for practitioners.
- All the following documents have been agreed and signed off by CBSCB in 2010/2011:
 - Bedford Borough & Central Bedfordshire Safeguarding Children Board's Protocol and Guidance: Working with sexually active young people.
 - Bedford Borough & Central Bedfordshire Safeguarding Children Board's Procedures for managing allegations and concerns regarding staff, carers and volunteers working with children and young people.
 - Bedford Borough & Central Bedfordshire Private fostering procedure revised.
 - Bedford Borough, Central Bedfordshire, Luton Safeguarding Children Board's, Bedfordshire Domestic Abuse Partnership & Luton Community Safety Partnership Information Sharing Protocol.
 - Resolution of professional disagreements relating to the child protection of children & the escalation of professional concerns.
 - Bedford Borough, Central Bedfordshire & Luton Safeguarding Children Boards Safeguarding Children and Young People from Sexual Exploitation.
 - Bedford Borough, Central Bedfordshire, Luton Safeguarding Children Board's Jargon Buster – Sexual Abuse of Children and Young People.
 - Bedford Borough, Central Bedfordshire, Luton Safeguarding Children Board's Multi-agency Protocol on Forced Marriage.
 - East of England Unaccompanied Asylum Seeking Children (UASC) Safeguarding Protocol.
 - Bedford Borough, Central Bedfordshire, Luton Safeguarding Children Board's protocol for working with vulnerable families where one or both parents have mental health problems.
 - Bedford Borough & Central Bedfordshire Safeguarding Children Board's Safeguarding Children abused through Domestic Abuse.

- Existing local protocols in key practice and procedure areas are under review to adopt single protocols across three LSCB areas.
- Local protocols have been developed on all key issues of concern as specified (*WT Para 3.14*).
- All approved protocols are disseminated across local distribution networks.

4. To further develop the agreed performance framework to measure and report on safeguarding improvement.

- Performance Management Information and a framework have been agreed with partners and are in place.
 - A comprehensive annual audit programme is in place with excellent engagement from partners.
 - Audits have been undertaken in respect of the following recommendations from the Child J SCR ;
- a) The LSCBs should, conduct a multi agency audit of the decision making process and current threshold for convening Child Protection Conferences, using senior personnel from the key statutory agencies. A sample of recent decisions should be examined and a threshold which is acceptable to all agencies should be agreed.
 - b) The LSCBs should conduct a multi-agency audit to establish the extent to which written agreements with parents or carers are being used and whether the agreements are adequately contributing to keeping children safe. The audit should consider whether the agreements are workable, clearly expressed, are being adequately monitored and whether the limitation of such agreements and their enforceability are understood by all involved.
 - c) There is evidence that Strategy Discussions under Section 47 of the Children Act 1989 have been inappropriately held over the telephone rather than this being the exception, that they often lack key agency representation and that they frequently fail to involve managers from each agency. The LSCBs should write to constituent agencies and stress the importance of these meetings and/or discussions being conducted in accordance with “Working Together to Safeguard Children” and the recommendations in the Victoria Climbié Inquiry Report. A multi-agency audit should be conducted six months from the publication of this report to monitor compliance.

5. To ensure the effectiveness and quality of the multi agency child protection training in order to improve outcomes for children.

- Dissemination of ‘CASPER’ alerts from the NSPCC via LSCB networks.
- An up to date Training Pathway is available on the Safeguarding Children Board Website and has been reviewed in light of the changes to Working Together 2010.
- Regular reports are presented to the Training Commissioning Group and the Training Development and Implementation Group which analyses evidence gained from training evaluation forms.
- A process exists to identify and respond to training needs identified by any of the CBSCB sub groups and this is a regular agenda item for the Training Commissioning Group.
- The Validation Panel has continued through the year and acts as a means of quality assurance for all child protection training. This is an ongoing process and is monitored by the SCB Training and Development Commissioning Manager and Training and Development officer.

6. To ensure that Serious Case Reviews are initiated appropriately and are timely, of good quality, and deliver maximum learning for all agencies.

- The SCR re Child J received a Good evaluation from Ofsted and there have been no new SCR's since October 2009.
- An SCR briefing event was held on the 21 September 2010 to over 300 staff. This was accompanied by written case summaries being made available to all agencies to disseminate to their staff. Lessons learnt locally and nationally are woven into all the training delivered by the LSCB's where appropriate.
- The LSCB Training team have been working on impactful training resources.
- IMR Authors Training was delivered in November 2010 to assist authors in learning the lessons from SCR's here in Bedfordshire and Luton.

7. To ensure safer recruitment practices across all agencies working with children in Central Bedfordshire

- Central Bedfordshire Children's Workforce Development Strategy 2010–2013 was launched in February 2010. The Strategy was presented to the Joint Steering Group in March.
- Progress against the objectives has been considered at the Joint Steering Group and movement has been made in most areas, although some further work will be required in the area of training as this is reviewed during 2011/12. A greater integration between Luton and Bedford Borough training functions with Central Bedfordshire is under development.
- Board members received progress reports at every Strategic Board and a final review of the Business Plan 2010/11 has informed decisions around priorities for 2011/12. The objectives themselves will continue to be significant features of child protection activity and will continue to be picked up in audits and management reviews.

Remaining challenges and issues for the CBSCB to address in 2011/12.

- To ensure a comprehensive dissemination of newly approved local protocols, procedures and practice guidance across Central Bedfordshire where collaboration with neighbouring authorities is required as new legislation and guidance is produced.
- To continue to ensure that the impact of child protection training is effective across the partnership.
- To develop a suite of training materials following the Child J SCR.
- To continue to secure and enhance the engagement of all partner agencies in the allegations management procedures.
- To continue to align local protocols to reflect locality practice.
- To develop the involvement of families, children and young people in the work of the CBSCB.
- To ensure relevant issues are addressed in relation to unannounced inspection of the frontline child protection and assessment services and the pending announced inspection.
- To address any implications for the CBSCB and its partners following the Government's response to the recommendations of the Munro report.
- To secure the Recruitment of a new Independent Chair following the resignation of the current chair, Maggie Blyth, on 9 June 2011.

2. Governance and accountability arrangements

2.1 In June 2010 the Strategic Board agreed and signed off the Central Bedfordshire Safeguarding Children Board's Constitution which covers the function, governance, accountability and membership of the Board.

2.2 The Central Bedfordshire Safeguarding Children Board is the decision making body for multi agency child protection activities within Central Bedfordshire. The work of the CBSCB fits within the wider context of all Children's Trust aims to improve the wellbeing of children in Central Bedfordshire in respect of the Every Child Matters Outcomes 2010/11.

- Being Healthy
- Staying Safe
- Enjoying and Achieving
- Making a Positive Contribution
- Achieving Economic Wellbeing

2.3 The functions of the CBSCB are to generate more effective arrangements throughout Central Bedfordshire in:

- Protecting children and young people from maltreatment;
- Preventing impairment of children's and young people's health or development;
- Ensuring that children and young people are growing up in circumstances consistent with the provision of safe and effective care;
- Enabling children and young people to have optimum life chances on entering adulthood successfully, particularly in terms of staying safe; and
- Ensuring that lessons are learned from episodes including when a child or young person dies, or suffers serious harm, where maltreatment is considered to have been a contributory factor.
- Undertaking that role to enable those children to have optimum life chances and to enter adulthood successfully.

2.4 The CBSCB carried out its functions this year by continuing to develop policies and procedures for child protection and promoting the welfare of children in the authority. This included considering the need for other local protocols for child protection and promoting the welfare of children in Central Bedfordshire in accordance with 'Working Together to Safeguard Children' (2010) paragraph 3.26, and policies and procedures in relation to the following:

- The action to be taken where there are concerns about a child's safety or welfare, including thresholds for intervention;
- Training of persons who work with children or in services affecting the safety and welfare of children;
- Recruitment and supervision of persons who work with children;
- Investigation of allegations concerning persons working with children;
- Safety and welfare of children who are privately fostered; and
- Co-operation with neighbouring children's services authorities and their Board partners.

2.5 CBSCB communicated throughout 2010/2011 to persons and bodies in Central Bedfordshire the need to safeguard and promote the welfare of children, raising their awareness of how this can best be done, and encouraging them to do so through training and providing literature and guidance.

2.6 The CBSCB was formally consulted as part of the development and review of the Children and Young People's Plan for 2011-2014.

2.7 The CBSCB is chaired by Maggie Blyth, Independent Chair, who is accountable to the Children's Services Authority via the Director of Children's Services for the effectiveness of the work of the Safeguarding Children Board. The Performance of the Independent Chair has been reviewed by the Director of Children Services for Central Bedfordshire Council. The Independent Chair is a member of

Central Bedfordshire's Children's Trust Board.

2.8 Each agency has designated particular named people as their CBSCB Strategic Board member(s) to ensure consistency and continuity in the membership of CBSCB Strategic Board. Members of CBSCB Strategic Board and named deputies have a strategic role within their agency in relation to child protection and promoting the welfare of children. They have the authority and experience within their agency to enable them to provide resources, commit their agency on matters of policy and practice, and hold their agency to account.

2.9 During 2010/11 the Independent Chair met with the Chief Executive for Central Bedfordshire Council, the Director of Children's Services for Central Bedfordshire Council and the Lead Member for Children Services in Central Bedfordshire Council to provide an independent perspective on child protection across the partnership. She also provided input into a session for members on the child protection system in January 2011.

2.10 The Director of Children's Services for Central Bedfordshire Council and the Lead Member for Children Services in Central Bedfordshire Council are both members of the CBSCB Strategic Board and are fully engaged on the Board and its work.

2.11 The CBSCB is funded by the following agencies;

Bedford Borough Council	Central Bedfordshire Council	NHS Bedfordshire	Bedfordshire Police	Bedfordshire Probation	CAFCASS	Total
25.09% £55000	25.09% £55000	33.55% £73,549	12.15% £26,634	3.82% £8,378	0.30% £550	£219,111

3. Monitoring and evaluation/quality assurance activity

3.1 The **Strategic Board** in carrying out its functions has over the last year :-

- Has overseen the governance arrangements of CBSCB;
- Set the strategic direction for CBSCB, taking account of developments in national policy, practice and legislation through the Department for Education;
- Ratified and adopted the Annual Business Plan;
- Ratified the Annual Performance targets for the Joint Steering Group and Sub Groups;
- Set the Annual Budget;
- Ratified the Business Plan and ensured its performance;
- Overseen the work of the Executive Serious Case Review Standing Panel and Child Death Overview Panel;
- Ensured that the planning and commissioning arrangements for all partner agencies takes into account child protection and the promotion of children's welfare;
- Ratified any amendments to the CBSCB Interagency Child Protection Procedures;
- Maintained links with relevant local partnerships in order to embed child protection procedures and principles within their constitution, policies and delivery plans;
- Reported to the Central Bedfordshire Children's Trust Board in relation to its performance.

3.2 The **Joint Steering Group** in carrying out its functions has over the last year :-

- Prepared, monitored and reviewed the annual budget and business plan for consideration by the Strategic Board;
- Prepared the Annual Report for consideration by the Strategic Board;
- Commissioned ad hoc task and finish groups to advance the objectives of the CBSCB Business Plan and to appoint Chairs for such groups and determine their terms of reference and timescales;
- Requested and received reports from sub groups;

- Approved policies and procedures;
- Responded to Department for Children Schools and Families (DCSF) Consultations.
- Developed a schedule of reports in respect of the child protection activity of partner agencies during 2011. To date the following agencies have presented their reports;
 - Bedfordshire Community Health Service
 - SEPT
 - Elective Home Education from Bedford Borough Council and Central Bedfordshire Council
 - Private Fostering (shared service)
 - Bedfordshire Youth Offending Service (shared service)

3.3 The **Joint Performance Management and Audit Group** in carrying out its functions has over the last year :-

- Developed and implemented an audit plan;
- Responded to the recommendations from the Child J SCR;
- Agreed a Performance Information Framework;
- Worked towards populating and analysing performance information reporting;
- Undertaken Case File Audits;
- Developed the lessons learnt from the case file audits.

3.4 The **Joint Executive Serious Case Review Panel** in carrying out its functions has over the last year:

- Made available on the LSCB's website the Executive Summary setting out the key findings of the Child J SCR;
- Closely monitored the action plan arising from the findings of the review so that the CBSCB is able to demonstrate that all of the recommendations have been implemented by April 2011.
- Ensured that member agencies can show that the implementation of recommendations has made services more effective and improved outcomes for children.
- Demonstrated through Single and Multi-agency audits that action plans have been implemented. However, these will be reviewed by the Board during 2011 to consider their effectiveness and to evaluate whether these action plans have made a difference.
- Shared a recommendation with the National Safeguarding Delivery Unit, set up by the previous Government. Their work plan has now been absorbed by the Department for Education.

3.5 The **Joint Policy and Procedures Group** in carrying out its functions has over the last year :-

- Revised or developed all documents this year taking into account legislative requirements and guidance concerning child protection.
- Incorporated into policy and guidance all lessons learned from SCRs.
- Ensured that CBSCB is working closely with Bedford Borough Safeguarding Children Board and Luton Safeguarding Children Board in developing specific cross agency/border processes.
- Continued to be responsible for identifying when policies require renewing and ensuring policies and procedures are kept up to date.
- Signed off policies, disseminated them via the Joint Steering Group and shared with the Strategic Board.

Please see section 1.5 above for further information about the work this group has achieved this year.

3.6 The **Joint Training Commissioning Group** in carrying out its functions has over the last year:

- Redrafted the Training Strategy to address the priorities of the CBSCB.
- Implemented and planning further relevant training in light of SCR and CDOP.
- Monitored the quality and robustness of systems to ensure consistent quality training via reports

from the Training Commissioning Manager.

- Ensured that the LSCB programme can evidence through the evaluation process that all agencies attending the courses and who work with children and young people are made fully aware of their child protection requirements.
- Continued to raise the profile of child protection across Central Bedfordshire through the courses and programmes.
- Ensured through the Training Commissioning Manager, who works closely with the Central Bedfordshire Workforce Development Group, that the workforce receives adequate training to enable all to be pro-active with regard to child protection.
- Ensured agencies contribute to the LSCB training fund according to individual need.
- Received reports from the Training and Development Commissioning Manager on the development, delivery and quality of the LSCB training programme.
- Commissioned training based on need and evidence of its effectiveness.
- Ensured national and local developments are incorporated into the training remit.
- Reported back to CBSCB on spend and outcomes achieved.

3.7 The **Joint Training & Development and Implementation Group** in carrying out its functions has over the last year:

- Developed and delivered a training programme in partnership with the Training Commissioning Group based on national requirements and local needs, including findings from Serious Case Reviews, internal reviews, local audits, new policies and any complaints that may inform the programme
- Continued to link the LSCB training provision with single agency child protection/safeguarding training provision and identified any opportunities for increasing interagency training.
- Ensured the provision of high quality multi-agency training and staff development opportunities.
- Included national and local statistics in the training programme.
- Continued to identify and support members who join/remain in the training pool.
- Received reports from the Training Officer and Training Commissioning Manager at each meeting about the development and delivery of the new programme.
- Monitored the quality of training provision working in partnership with the Training Delivery Officer and Training Commissioning Manager at the Validation panels.
- Regularly reported to the Training Commissioning Group on training needs, provision and quality via the Training Commissioning Manager.
- Developed and supported a pool of facilitators in the delivery of the local inter-agency practice groups.
- Obtained regular updates from pool trainer members.

3.8 The **Child Death Overview Panel**.

- The statutory Child Death Overview Process (CDOP) is now well established. The aim of this process is to review all child deaths between 0-18 years with a particular focus on unexpected child deaths. The process aims to identify themes and public health messages to prevent similar deaths in the future and to ensure that there are no child protection issues and that the case does not fit the criteria for a Serious Case review. The panel meets on a regular basis with meetings being very well attended by a range of professionals from all agencies, including health, social care, public health and the police.
- The Rapid Response/Information Sharing meeting that is required to take place following the unexpected death of a child has become embedded in the process and usually takes place within 48 hours of the death being notified to CDOP. The manager for CDOP coordinates this meeting ensuring that all practitioners involved with the child and family attend.
- The purpose of the meeting is to share information about what led to the child's death, to ensure there are no child protection concerns for other children in the family and to establish who will support the family following the death.

- During the period 1st April 2010 to 31st March 2011 a total of 63 child deaths were reported to the Bedfordshire and Luton Child Death Overview Panel. This is a decrease of just over 11% on the previous year's figures. 14 of the deaths were of children living in Central Bedfordshire. This represents a decrease of 12.5% on last year's figures. Further detailed analysis of the data will be available in the Annual Report for 2010-2011.
- The Bedfordshire and Luton Child Death Overview Panel have met seven times in the period 1st April 2010 to 31st March 2011. On each occasion the panel has been quorate. In addition there have been 2 further meetings with the neonatal and midwifery teams at the Luton and Dunstable Hospital to discuss the large number of neonatal deaths reported.
- In total the CDOP panel have reviewed and closed 69 cases, some of which are from the previous year's cases. Six of the fourteen cases reported in Central Bedfordshire during 2010-2011 have been reviewed and closed, as well as six outstanding cases from 2009-2010 and one case from 2008-2009.
- The panel has to consider if they have identified any factors which may have contributed to the death of the child and which, by means of locally or nationally achievable interventions, could be modified to reduce the risk of future child deaths. Some identifiable factors have included maternal smoking, raised maternal BMI, drug misuse and consanguinity. Further detailed analysis will be available in the annual report.
- The CDOP Terms of Reference and Procedures have been reviewed and are available on the Safeguarding Children Board's website. Funding has been agreed across the county from local authorities and NHS Commissioners to fund the CDOP process for 2011-2012. The annual report will be presented to Central Bedfordshire Safeguarding Children Board during the latter part of 2011.

4. Priorities for 2011 – 2012

The following have been identified as the priorities for the CBSCB for 2011 – 2012

4.1 The Impact of the Munro Review on LSCB's role and function:

- The seven Core Business Objectives are likely to remain relevant; however a sharper focus on child protection activity is required following on from the findings of the final Munro review of May 2011.

4.2 The impact of the Local Government Finance Settlement on the provision of early intervention services

- *'I recommend proper co-ordination of the machinery of government to put Early Intervention at the heart of departmental strategies, including those seeking to raise educational achievement and employability, improve social mobility, reduce crime, support parents and improve mental and physical health.'* Graham Allan, January 2011 Report on Early Intervention.
- Any focus on improvements to the child protection system in Central Bedfordshire should be aligned to continued investment in early intervention services where financial settlements can allow.

4.3 The rise in the number of children subject to child protection plans

- Nationally the ADCS has noted a 33% rise in children subject of Child Protection Plans across respondent authorities equivalent to an all England increase of approximately 9,200 children. The impact on those professionals involved in child protection functions in attending statutory child protection meetings alone equates to additional hours per case, without accounting for the

necessary travel time, writing reports or completing casework recording or child protection work with the child and family.

- Locally in Central Bedfordshire there has been a significant increase in the number of child protection plans, showing an increase in the past year of 58.4%.

4.4 The impact of Educational Reforms outlined in the *The Importance of Teaching: Schools White Paper 2010*.

- The movement towards academies as the main delivery mechanism for schools will have clear implications for the way in which the CBSCB relates to the schools sector and there will be a vital role in maintaining a focus on, and accountability for, child protection in partnership with schools.

4.5 The impact of the NHS White Paper, *Equity and excellence: Liberating the NHS*

- Nationally LSCB's have had common issues concerning:
 - The development of SARC's for the improved handling of sexual abuse allegation.
 - Succession planning and provision of Child Protection Medicals.
 - The maintenance of children's child protection services within the changing NHS structures.
 - The impact of future arrangements on child protection systems and the future of designated staffing and duties.

4.6 The Impact of the Changes within the Youth Justice System

- The full implication for changes to the Youth Justice Board are still to be understood completely, but along with the overall changes in the justice system: *Breaking the cycle: effective punishment, rehabilitation and sentencing of offenders Green Paper 2010* and changes to the care planning regulations for children in care and the ongoing impact of the Southwark Judgment, there will be a continuing need to consider the child protection of older adolescents. This will require close co-operation with Bedfordshire Police and Bedfordshire Probation.

4.7 Proposed areas of focus for 2011 -2012:

- To improve the effectiveness of Child Protection interventions, analysing carefully the reasons why increasing numbers of children have become subject to child protection plans and looking at ways to prevent this.
- To develop stronger relationships between the Central Bedfordshire Safeguarding Children Board and local schools.
- To review the requirements for child protection in Health and make clear recommendations for the maintenance of child protection during a period of transition.
- To promote the child protection of older adolescents who may be vulnerable to crime, homelessness or sexual exploitation.
- To incorporate the lessons from SCR Child J, namely the identification of sexual offending and liaison between adult criminal justice services and children' social care in relation to work with sex offenders. With the extension of Sarah's Law in Bedfordshire since August 2010 and the outcome of the current pilot on Domestic Violence Prevention Orders in other police areas, CBSCB should ensure that strategic links between adult and child protection are strengthened

4.8 Links with the Central Bedfordshire Children's Trust:

- Central Bedfordshire Children's Trust has identified CBSCB as the lead for the following priority and objectives which will be added to the CBSCB Business plan for 2011–2012:

Protecting children and keeping them safe:

- Protect children and young people from harm by providing a co-ordinated and effective child protection process.
- Reduce the impact of domestic abuse on children and young people.

Central Bedfordshire Council – Children’s Social Care
--

In April 2010 a single Safeguarding Children Board was established in Central Bedfordshire, with responsibility for monitoring and evaluating the effectiveness of multi- agency child protection work. The new arrangements create a clear relationship between the Strategic Board, the Children’s Trust and the Council, leading to local accountability and leadership.

The Business Support Team arrangements hosted by Central Bedfordshire Council provide an infrastructure for both the Safeguarding Boards of Bedford Borough and Central Bedfordshire and have promoted consistency of practice and work to ensure efficient use of the resources of all partners. In addition, greater collaboration with Luton Safeguarding Children Board has been developed throughout the year. In particular there has been an increase in shared training events and an options appraisal of the potential for amalgamating the training functions of the three LSCB’s during 2011/12.

Through the Stay Safe Delivery Group of the Children’s Trust overseen by the Safeguarding Board, work to address the priorities within the Central Bedfordshire Children’s Plan 2009/10 has been progressed. These have included:

- a review and implementation of a revised CAF process development and Social Care referral form;
- implementation of an anti-bullying strategy;
- developing good practice in relation to the children’s workforce in relation to anti-bullying;
- alignment between the anti-bullying strategy and other associated strategies;
- development of LSCB training in relation to domestic abuse;
- publication of revised LSCB domestic abuse procedures and information sharing protocols;
- the launch of a revised education pack for delivery in schools in respect of domestic abuse;
- embedding MARAC processes across agencies;

Children’s Services Operations

Appendix 2 sets out the outturns for child protection for the period 01/04/09 to 31/03/11 in Central Bedfordshire. Alongside this data are the latest available national and statistical neighbour comparisons for the period ending 31/03/10.

Percentage figures for Central Bedfordshire for the period 01/04/10 to 31/03/11 identify:

- 35.4% increase in the number of contacts to social care
- 18.7% increase in the conversion rate: contacts to referrals
- 60.7% increase in the number of referrals to social care
- 27.5% increase in Section 47 enquiries started
- 32.3% increase in initial assessments undertaken
- 26.7% increase in core assessments undertaken
- 35.0% increase in children who were the subject of a child protection conference
- 0.5% increase in children subject to a child protection plan at period ends (31/03/10 & 31/03/11)
- 7.4% increase in the numbers of looked after children at period ends (31/03/10 & 31/03/11)
- 17.5% decrease in the number of children starting to be looked after.

In many areas of statutory activity in relation to Children in Need and Children in Need of Protection there has been a marked increase in activity and hence demand on service provision within Children’s Services Operations and their partner agencies.

There has been a rise in the number of contacts to Children’s Services Operations during the year and since April 2010 there continues to be an upward shift in the conversion rate of contacts to referrals, which is a result of the application of revised thresholds indicative of improved working practices.

However the rate of increase has stabilised in certain areas during the year since April 2010 as revised thresholds have become embedded and understood by practitioners and managers. For example, the number of children subject to a child protection plans has reached a plateau. This would be anticipated following a period of adjustment in thresholds for child protection conferences. As a result the number of children becoming looked after, following an initial rise in activity, is also stabilising.

Table 1 sets out the increase changes nationally in child protection work.

Table 1 National Change in Activity	Increase Year Ending 31/03/08 to 31/03/09	Increase Year Ending 31/03/08 to 31/03/10	Increase between Two Years Ending 31/03/08 and 31/03/10
Referrals	1.6%	10.4%	12.1%
Section 47 enquiries	9.5%	4.3%	14.2%
Initial Assessments	9.1%	13.3%	23.6%
Initial Child Protection Conferences	1.0%	5.9%	6.9%
Child Protection Plans	16.8%	14.7%	33.9%
Children Looked After	1.6%	4.5%	6.2%

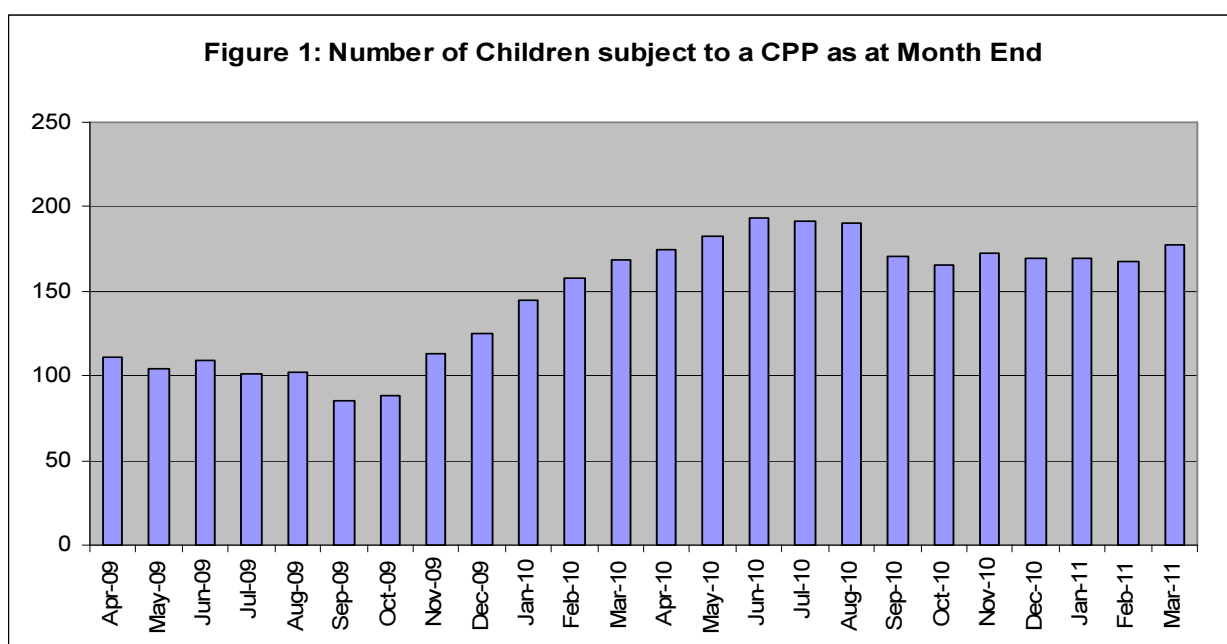
Source: DFE Statistical Publications (Children in Need / CPR3)

Child Protection Activity

The number of children subject to child protection plans at the end of March 2011 in Central Bedfordshire was 178 children (31 per 10,000 of the population under 18); these figures peaked at 191 in July 2010. This compares with the national average for 2009/10 of 32 children per 10,000 (latest figures available) and our statistical neighbour average of 27 per 10,000.

During 2009/10 159 children were made the subject of a child protection plan compared to 208 children during 2010/2011.

Figure 1 illustrates the change month on month of children subject to a child protection plan. Figure 2 illustrates the category of child protection plan for children subject to a child protection plan at the end of March 2011.



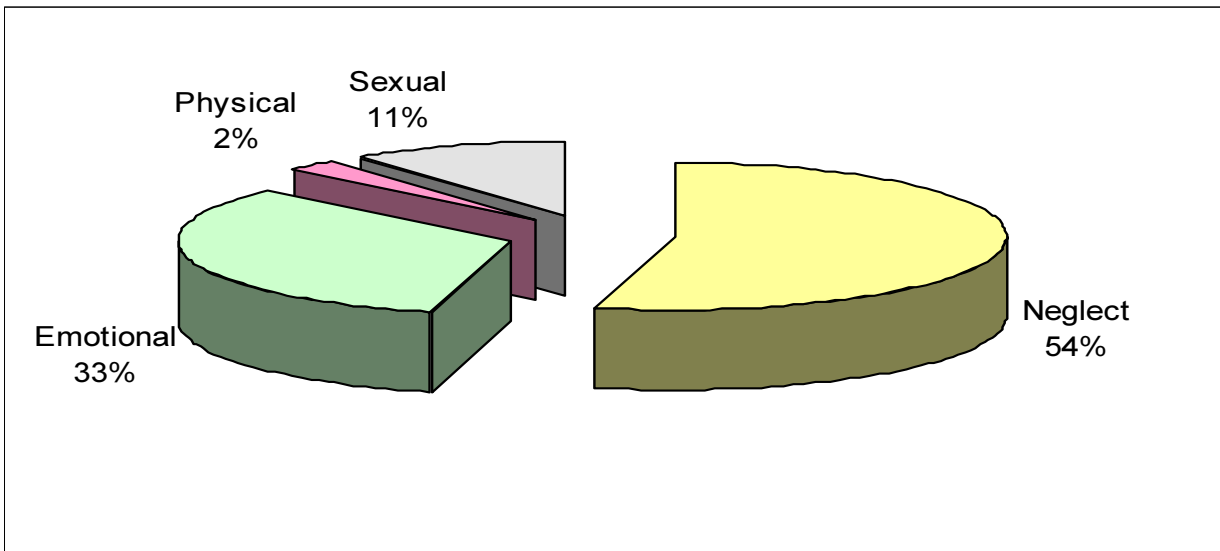


Figure 2: Percentage of children subject to a CPP at 31/03/11 by category of abuse

Overall figures for the number of children subject to a child protection plan and those becoming the subject of a plan indicate that the rise experienced during the first year of the new Council has begun to stabilise and reflect the revision of thresholds for child protection cases which has evolved over the last two years. However this has been a challenge, requiring significant additional resources both within the Council and for partner agencies.

All children subject to a child protection plan have had their reviews held within timescale since 01/04/10. All children subject to a child protection plan have a qualified social worker allocated to their case.

Child Protective Activities - Developments in response to the Unannounced Inspection 2010

The annual unannounced inspection of contact, referral and assessment arrangements in March 2010 resulted in areas of good practice being highlighted. No priority actions were required but some areas for development were identified. For Children's Services Operations, requirements to improve recording and record management practices are being actively pursued. A review of the children's recording system ICS is currently underway and a project plan is in place to implement electronic social care records.

For the authority, in conjunction with its partners, improvements in the use of the Common Assessment Framework to promote better outcomes for children and work to improve consistency in the quality of referrals were identified. The Common Assessment Framework and its delivery have been refreshed with good engagement from partner agencies significantly impacting upon the information received by Children's Services Operations as a referral, and the de-escalation of cases back to the community.

A revised Social Care Referral form was launched in September 2011 and has been well received by partners.

A further unannounced inspection took place in March 2011, the results of which are awaited at the time of writing this report.

Significant monitoring of activity and performance in relation to referrals, section 47 enquiries and child protection conferences is undertaken within Children's Services Operations in order to ensure compliance and quality monitoring of child protection work. These include:

- Regular case supervision by managers. This has been a focus of qualitative audits within the service over the last six months along with monitoring the use of chronologies, genograms and recording the voice of the child. Improvements in practice have been noted in these four areas.

- Quality Assurance processes including monthly meetings between Review Managers who chair child protection conferences and team managers
- Monitoring forms completed by Review Managers following every child protection conference to identify specific case issues, concerns and good practice to social workers and their managers.
- Bi monthly audit of cases by all managers from the Director of Children's Services to Team Managers.
- Qualitative audits undertaken by a dedicated Audit Manager.
- Transfer and Closure audits undertaken on all open case files by frontline managers, supervisors and the receiving team.

A refreshed Quality Assurance Strategy for Children's Services Operations was adopted in April 2011.

A wide range of additional child protection activities are undertaken by practitioners and managers within Children's Services Operations which include:

- Representation at multi agency Multi Agency Risk Assessment Conferences for victims of domestic abuse, meetings on a monthly basis to co-ordinate responses and interventions across agencies in relation to victims of domestic abuse and their children;
- Attendance at Operational and Strategic Multi Agency Public Protection meetings;
- Multi agency interventions in relation to those children and young people who are persistently missing from home and /or care.
- Arrangement to safeguard the needs of children who are privately fostered.
- Attendance at Child Death Overview Panels.

LSCB Training

The LSCB Training Function has delivered over 60 days of face to face multi agency training to over 900 delegates from CBSCB partner agencies and voluntary organisations in the last year.

The LSCB Training Function is the sole provider of multi agency child protection training in Central Bedfordshire. The Training function has recently begun to conduct Follow Up telephone evaluation with delegates at 6-8 weeks after attending a 1 day 'Domestic Violence and the Impact on the Child' LSCB training course and early indications are that this course has a positive impact on worker knowledge and skills and indirectly the children and young people they are working with.

Comments at 6 weeks after course date included a sustained and improved awareness of:

young people's offending behaviour
the need to offer improved support in school
Help to identify areas for support to children

Comments made at the end of the course by delegates attending this course and our other courses regularly highlight the ways in which our training has helped them to develop their child protection knowledge. This method of Evaluation will be rolled out across all courses over the coming two years.

Child protection policy and priorities in the CYPP – Tri-annual MARAC Multi Agency Awareness Briefings for all staff and volunteers co-ordinated and hosted by the CBSCB and to continue into 2011-12. CBSCB delivered four multi agency 1 day 'Domestic Violence and the Impact on the Child' courses, to continue into 2011-12. CBSCB hosted and co-ordinated two ½ day multi agency Briefing events as part of learning the lessons from the Serious Case Review of Child J; two further ½ day Briefings planned for June 2011 (Grooming of professionals and Offender management themes).

Child protection in schools - Whole school training package for delivery to CBC schools validated by CBSCB in February 2011; Designated Personnel training package used with CBC school staff validated by CBSCB in February 2011.

Safer workforce - CBSCB delivered three multi agency 1 day 'Safer Recruitment for Managers' courses to continue into 2011-12.

Domestic Abuse/Adult Mental Health/Learning Difficulties & Disabilities/Drugs & Alcohol - CBSCB has delivered three 1 day 'Impact of Domestic Abuse on the Child' courses. CBSCB will be delivering four 2 day 'Impact of Parental Illness on Parenting Capacity' courses during 2011-12. CBSCB has a ½ day awareness course on Parental Substance misuse in **development** for 2011-12. CBSCB has a one day course 'Safeguarding Children with Disabilities' **course** in development.

Private fostering - Awareness materials and resources are presented by the Fostering Manager on all two day Safeguarding Children and Inter Agency Working courses.

Engagement of the wider community in child protection, e.g. VCS, faith groups - 157 days of training have been delivered to the Voluntary and Faith sector at no charge. Some delegates have attended more than one course. This involvement is set to continue for 2011-12.

Planning is at an early stage to consider the ways in which Looked After Children who are care leavers and parents/carers of children with disabilities may become involved in course planning, development and delivery.

Bedfordshire Probation

In 2009, Bedfordshire Probation Trust was inspected by Her Majesty's Inspectorate of Probation. Some areas for improvement were identified in relation to child protection as a result of which actions were included in an improvement plan implemented during 2010/11. All relevant actions have now been completed. These included having named child protection leads within each of our Local Delivery Units - the Bedford/Central Bedfordshire Local Delivery Unit lead represents the Trust on the LSCB steering group, acts as a link back to the LDU and is the first point of contact if there are child protection issues that require escalation.

The Trust also produced a 'Core Brief' for Probation staff on 7 Key Principles in child protection. These are:

1. Share information
2. Escalate concerns
3. Take responsibility
4. Think child
5. Make accurate records
6. Consult
7. Use guidance.

The brief makes specific reference to the importance of Probation staff considering the impact of parental behaviour such as substance misuse and domestic abuse on children. The key principles will frame our auditing of child protection practices going forward. Bedfordshire Probation Trust has continued to ensure that staff receive an appropriate level of child protection training, including refresher training.

Bedfordshire Police

During the past year, Bedfordshire Police have appointed Assistant Chief Constable Andrew Richer as lead for Safeguarding. Mr Richer now chairs a Force Child and Young People's Strategic Group that is responsible for coordinating and providing strategic direction for all services provided by Bedfordshire Police to Children and Young People.

A Children and Young People Tactical Group chaired by Detective Superintendent Nigel Stone is responsible for the implementation of decisions made at the Strategic Group.

The success of this group has been to coordinate the work carried out by Safer Neighbourhood Policing Teams and the work carried out by the Public Protection Unit.

2010/11 SUCCESSES

A business case was approved by both the Chief Constable and the Police Authority for an increase in fourteen staff for the Public Protection Unit. These additional staff included four Sergeants. The additional staff have been placed in the child and domestic abuse teams, the sex offender management team, rape investigation and two Constables have formed a new team targeting Honour Based Abuse.

The sex offender management team workloads have now come down to the national average, the rape investigation team has been restructured and aligned to the Safeguarding Teams and the service provided to victims of HBA is seen as Best practice Nationally. Bedfordshire Police have taken out more Forced Marriage Protection Orders than any other Force, even more than the large Metropolitan Forces.

One case was heard by Sir Nicholas Wall (President of the Family court) at the Royal Courts of Justice in London. He commended the approach taken by Bedfordshire Police and stated that the case should be seen as a model for others to follow.

During the summer of 2010 a business plan was approved by the Force Executive for the expansion of the Missing Person Team. The team has now grown from two police constables to a Sergeant and six police constables (in addition to the extra fourteen officers). This has bolstered our ability to deal in a timely fashion with all children and young people who go missing. The team has reduced the number of children and young people going missing by over 30%.

WORK FOR 2011/12

The major issue to be dealt with by Bedfordshire Police is to maintain or improve services over the next four years whilst reducing the budget by 20%. The Force is currently in the process of restructuring.

The Public Protection Unit will lose 25 officers. However, twenty posts will be civilianised, resulting in a loss of five posts. The main area of work affected by this loss of staff numbers is in Domestic Abuse. There will a change of process for Domestic Abuse where work traditionally undertaken by the Public Protection Unit will be undertaken by First Response Officers and Safer Neighbourhood Policing Officers. This means that Bedfordshire Police will see a reduction of 20% in our budget but the work of the Public Protection unit will remain largely untouched. The loss of officers and the introduction of civilian support staff will in fact provide the Public Protection Unit with the opportunity to further professionalise and enhance the services provided.

Bedfordshire Community Health Service

Bedfordshire Community Health Service (BCHS) provides a range of community health services. These include adult and children's community nursing; intermediate care; therapies; dentistry; drug and alcohol services; nursing services within HMP Bedford and community bedded units in Biggleswade and Bedford. These services are provided to the populations of the unitary authorities of Central Bedfordshire Council (CBC) & Bedford Borough Council (BBC). Some of the service provision also includes Luton.

The year April 2010-2011 has been an extremely active period with focus on organisational change and national targets. This has resulted in a number of competing priorities. BCHS has continued to place a high priority on child protection and it is embedded throughout the organisation at all levels via a robust governance structure, reporting and audit. This will continue during the period of transition to our new acquirer.

BCHS has refreshed its public declaration of its commitment to child protection, giving BCHS Board assurance that it has robust systems in place to protect and promote the welfare of children. (Compliance with David Nicholson letter June 2009).

BCHS Safeguarding Children Policy and Guidance has been reviewed following publication of revised Working Together 2010.

BCHS Safeguarding Training Strategy and Training Matrix reflects BCHS mandatory training requirements, in line with Inter Collegiate Document 2010. Work is currently being undertaken to assess and monitor appropriate level of competencies as indicated in the former document.

Current training data reflects that;

97% of staff completed level 1

58% of staff completed level 2

72% of staff completed level 3/4

BCHS has a clear line of accountability within the organisation for work on child protection. BCHS has a designated team of safeguarding professionals, including a designated Looked after Children's Nurse. BCHS safeguarding children and vulnerable adult professionals work alongside each other at an operational level, with leadership from Head of Service, reporting to the Lead Nurse and BCHS Committee via a combined governance group. This governance structure affords sharing of good practice and lessons learnt to inform and influence daily practice.

BCHS works in collaboration with the local authorities in management of pathways to facilitate access to appropriate health care and statutory health assessments for Looked After Children. This service is currently under review as part of a multi agency forum to ensure compliance with statutory guidance, Promoting the Health and Well-being of Looked after Children 2009.

Last year's Intensive Support Visit from the SHA highlighted a concern with respect to a lack of information in place for LAC, resulting in a recommendation to check compliance with statutory guidance.

The recent review has identified a number of issues which need to be addressed to ensure full compliance with the statutory recommendations and this service has been given high priority and is being managed through the implementation of a multi agency action plan.

BCHS 0-19 Team service is now fully aligned to geographical areas, affording increased partnership working across disciplines and agencies via Children's Centres. This service has a focus of early

intervention and prevention, with the provision providing universal services and progressive intervention, by taking the lead on implementing the Healthy Child Programme.

Locality Managers and Team Leads are now established posts, which have firmed up monitoring of child protection activities, support and development of frontline professionals. Professionals from this service are required to have a higher knowledge and competence based skills with respect to child protection.

BCHS continues to participate in multi agency child protection forums/conferences, including Multi Agency Risk Assessment Conferences (MARAC) with respect to management of high risk domestic abuse incidents. BCHS uses information provided by Bedfordshire's Child Death Overview Panel (CDOP) to influence practice. For example, this year BCHS has supported CDOP action with respect to identified risk of babies/young children's sleeping positions in car seats, by ensuring that all new parents are made aware of the potential risk and steps they should take to mitigate this risk.

During the course of the year BCHS has acknowledged that areas of development are required with respect to quality of referrals and reports as part of child protection processes. Work in progress is training on the use of chronologies to identify needs/risk and inform referrals and reports.

As a result of internal audit and serious case review recommendations, BCHS has implemented a new safeguarding supervision model. This model challenges 'fixed thinking' using the principles of a 'fresh pair of eyes' and 'playing devil's advocate'. The model has been implemented within the 0-19 Team Service, as a pilot, to be audited with a plan to role out to other BCHS children's service teams.

The BCHS audit programme has included audits with respect to growth monitoring and 0-19 Team support staff process/documentation. These audits have resulted in firming up the process and recording of work undertaken by support staff within these teams, ensuring that they are better informed about the families that they are working with. A review of the policy/guidance on growth monitoring is currently being undertaken to support staff to ensure accurate recording and analysis to inform referrals and reports. These practice based issues are important elements to inform child protection processes and focus on outcomes for children.

Conclusion

The above report gives a brief account of BCHS commitment and activities to ensure that the focus of promoting the welfare and protection of children remains high on the agenda and reflects that BCHS continues to provide a quality of service which strives to improve outcomes for children & young people.

The Voluntary Organisations for Children, young people & families

VOCyfp has a good relationship with the Central Bedfordshire Safeguarding Children Board. The sector benefits from free of charge training which has continued again in 2010–2011 indicating the commitment of Central Bedfordshire and their statutory partners in supporting the sector to fully engage in the child protection agenda and sustain the high level of professionalism in the sector. This has been heralded as a model of good practice in the region and the sector would like to formally thank partners for their support.

The sector has been actively promoting the E learning package. This package is suitable for the wide range of organisations that make up the voluntary sector, from the faith and community groups who need a basic introduction to child protection through to the larger commissioned agencies who use it as part of their induction process.

This year the VOCyfp Officer has attended a number of the LSCB sub groups, sat on the Training Validation Panel and promoted all the LSCB training opportunities and protocols through the website.

Case study - This year VOCyfp joined forces with Community Voluntary Service Mid and North Beds to run a **Fit 4 Safeguarding** pilot. These taster sessions were aimed at grassroots and faith groups who work with children and young people and/or vulnerable adults. Participants had to complete the LSCB E learning foundation module as an entry requirement and worked through the Safe Network (Children England and NSPCC) resource pack during the sessions, highlighting practical ways of making sure child protection policy and procedure are understood by all in their project.

The **Fit 4 Safeguarding** sessions were attended by 31 groups from across Bedford Borough and Central Bedfordshire, 26 of them working with children and young people. The evaluations were positive and constructive. Many of the groups already have a policy and a named person, but struggle to find a way to make this easily accessible to staff, volunteers and others. In addition, seven groups attended a further taster session for black and minority ethnic groups.

In 2011, the VOCyfp plans to promote the Safe Network national safeguarding standards to groups across Bedfordshire. The VOCyfp Officer has taken on the role of Safe Network Champion for Bedfordshire.

NHS Bedfordshire

NHS Bedfordshire commissions a range of health services from a range of providers, and has the responsibility for ensuring that the health contribution to child protection and promoting the welfare of children is discharged effectively across the whole local economy through its commissioning arrangements. Clinical governance arrangements are in place to monitor child protection arrangements with provider organisations. This is led by the Executive Nurse Director and the Designated Nurse for Safeguarding Children & Young People.

2010/12 has been a very busy time for NHS Bedfordshire, with a particular focus on a number of changes both nationally and locally. However, during this period of significant change, the core purpose remains the delivery of improved quality for patients by improving safety, effectiveness and patient experience.

It is anticipated that 2011/12 will be an equally demanding year for the NHS as it takes on the challenge of continuing to deliver high quality care for patients, while beginning in earnest the transition to the new system envisaged in *Equity and Excellence: Liberating the NHS*. The over-arching goal in this period is to build strong foundations at local level for the new system by maintaining and improving quality, by keeping tight financial control and delivering on the quality and productivity challenge and by creating energy and momentum for transition and reform.

The NHS Operating Framework sets out the national priorities for 2011/12 which will continue to develop in anticipation of the new role of the NHS Commissioning Board in driving quality improvement across the system.

It is critical that, as commissioners, NHS Bedfordshire maintains clear accountability arrangements during 2011/12, even as parts of the new system come into place in shadow form. In order to secure the capacity and flexibility needed for the transition period, NHS Bedfordshire and NHS Luton have formed a cluster PCT. This offers capacity to the emerging GP consortia and addresses the broader drive to reduce running costs across the region. The development of a shadow GP consortium for Bedfordshire is continuing to progress.

Intensive Support Team visits from the Strategic Health Authority.

In the Annual Review 2009/10, NHS Bedfordshire reported a two day intensive support visit from the SHA and reported a positive verbal feedback whilst waiting for the written detailed report.

The report was received in August 2010, and included eight advisory recommendations for NHS Bedfordshire and partner organisations. There are two outstanding recommendations which are currently being addressed. The action plan has been shared with the LSCB's. NHS Bedfordshire has undertaken a review of Looked After Children (LAC) Services and arrangements with partner agencies. NHS Bedfordshire is also reviewing provision of services across Bedfordshire and Luton for children who have been subjected to sexual abuse.

Conclusion

To this end, this NHS Operating Framework sets out how the NHS will maintain tight financial control during 2011/12. These measures will no doubt create real challenges in some parts of the system, but they are critical to ensuring maintaining a strong financial position to get the new system on the right footing from the outset.

South Essex Partnership Trust (SEPT)

Governance Arrangements - Trust Safeguarding Team

The Trust has recently expanded the Safeguarding Team with the appointment of an Associate Director of Safeguarding, demonstrating the Trusts continued commitment to the Safeguarding agenda as seen below in Table 1. The Trust Safeguarding Team reports to

- Safeguarding Group Monthly
- Clinical Governance Committee Quarterly
- Executive Team Monthly
- Trust Board Annually
- Trust Board Serious Case Review Annually

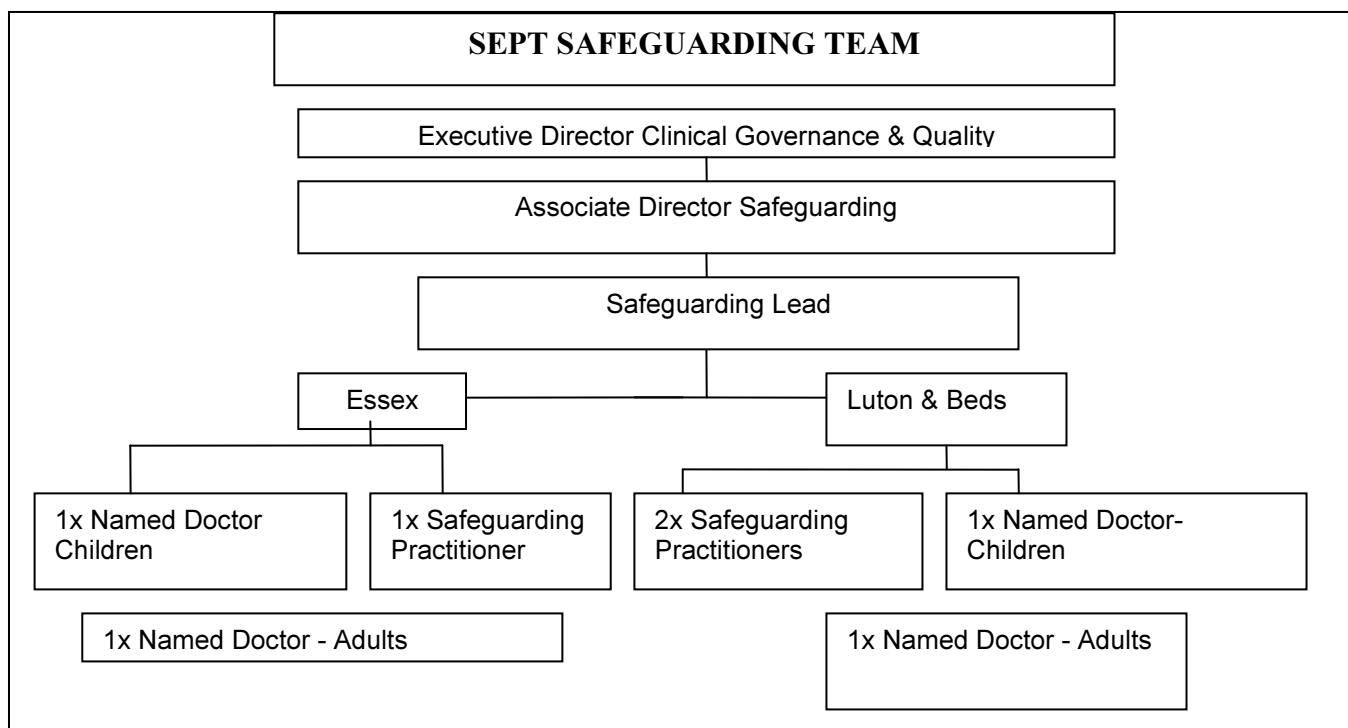
A number of ad hoc reports are provided on request.

Safeguarding Group

The Trust Safeguarding Group is chaired by the Executive Director of Clinical Governance and Quality. Membership has increased this year to include Associate Directors, Doctors and senior staff representing all Trust clinical services. The group have increased the frequency of meetings which are now held monthly in order to address the growing requirements of the Safeguarding agenda.

All reports, policies and protocols are tabled at meetings before being presented to the Trust Executive Team or Board. An action plan containing national, local and Trust directives is reviewed at each meeting to ensure compliance.

The Central Bedfordshire LSCB reports are a routine agenda item and discussed at these meetings.



Policy & Procedures

The Trust has integrated Safeguarding policies for Children and this has been ratified by the Trust Board. The Policies reflect national and local guidance and contain a number of new requirements that comply with Working Together 2010, National Patient Safety (NPSA), and National Institute for Clinical Excellence (NICE) advice and reporting pathways with the Care Quality Commission (CQC).

Safeguarding Training

A training strategy has been completed which outlines training levels underpinned by Agenda for Change Knowledge and Skills framework (KSF) Core Dimension 3 which focuses on maintaining and promoting health, safety and security of all those who come into contact with Trust services.

The Virtual Learning Zone (VLZ) Programme has been updated to comply with Luton and Bedfordshire Safeguarding processes. Training Levels 1 & 2 for Luton & Bedfordshire is now at 100% compliant. Training compliance is a standard agenda item at the Safeguarding group.

Additional training regularly takes place for example:-

- Common Assessment Framework for Children (CAF) has been given to staff in Luton and Bedfordshire to raise awareness of issues for children of adult clients.
- Awareness raising sessions on request or where need identified

Key Performance Indicators (KPI)

The number of referrals to Children's Social Care is reported regularly to the Trust Board, and the outcome of these referrals is monitored.

Pathways- HR/Incident/Complaints/PALS

Safeguarding is an inherent part of many Trust services. Pathways have been established with the above departments to ensure that safeguarding is considered and responded to in a timely and effective way. The Safeguarding team have recently been involved in the development of the Datix reporting system which will ensure consistent processes and responses throughout the Trust.

Strategic Framework 2010-2013

A Strategic Framework for the Safeguarding service has been developed and agreed by the Executive Team. The Framework aims to establish the vision for the Trust Safeguarding service for the period 2010-2013. The strategic framework builds on existing achievements and demonstrates the Trust's continued commitment toward ensuring clients are safeguarded, families are supported and staff are skilled in recognising and responding to Safeguarding issues. The Framework includes a number of key priorities including:

- Structure & Reporting Arrangements
- Clinical Governance
- Partnership Working
- Serious Case Reviews
- Strengthening Learning
- Equality & Diversity
- Human Resources

Key objectives for 2011 are placed on the Trust Safeguarding Action plan to ensure compliance. The Trust annual plan and Integrated Governance plan emphasise the importance of Safeguarding and place it as a high priority within future plans.

Partnership Working - Local Safeguarding Children Boards

The Trust is actively represented on 5 LSCB's. This representation is an important part of developing and influencing services for Trust clients. The Trust is able to offer expertise to Boards on Mental Health, Drug & Alcohol and Learning Disability issues.

Safeguarding Activity

In the year 2010/2011 staff from SEPT in Bedfordshire and Luton have made a total of 85 referrals to Local Authorities, both in the form of child protection/child in need referrals and CAF assessments. Since July 2010 the outcomes of referrals have been recorded and monitored and this information will be incorporated into the reporting framework.

Safeguarding Developments - Safeguarding Leads

There are currently seven Safeguarding Children Leads within the Central Bedfordshire area of the Trust and an additional eight leads who work across the county as a whole. The Leads are an active group who champion the safeguarding agenda within their respective teams by cascading information and advising colleagues. The safeguarding children leads meet with the Named Professional for Safeguarding Children and Head of Safeguarding six times a year. This meeting gives an opportunity to share information with practitioners and provides a forum for group supervision around safeguarding children cases. Minutes from these meetings are fed into the Safeguarding group meetings.

Trust Intranet – Safeguarding Site

The Safeguarding link on the Trust Intranet now contains all processes, policies and referral forms regarding Safeguarding across the Trust. A weekly NSPCC bulletin is available in addition to safeguarding research and training flyers etc. 'Lessons learnt' is produced following the completion of a serious case review. Staff now routinely access the site for referral forms etc.

The latest Safeguarding news update, details the guidance for '*Children who go missing or run away from home*' this emphasises the importance for SEPT staff to follow the protocol for children who fail to attend appointments as this may be associated with those who go missing. The safeguarding site currently contains a summary of the lessons learnt from the Child J Serious Case Review conducted by the Central Bedfordshire LSCB.

IST Outcomes

The Panel concluded that SEPT had effective Safeguarding processes in place and praised the commitment of the Named Professional for Luton & Bedfordshire and the high priority the Trust gives to the Safeguarding agenda.

The Panel members spent a morning on Poplar Unit in Essex, including the school rooms. The Chair of the Panel stated that Poplar unit was '*Indicative of a Partnership Trust at its best*' and particular praise was given to the structure of the Crisis Team, the Contract form that family/Child/Young Person completes on admission, the structured routine and activities offered and the enthusiasm of staff.

Poplar Adolescent Unit

Poplar Unit is an 11 bed unit for children and adolescents with Mental Health problems in Essex, Luton and Bedfordshire. Poplar Unit has two Safeguarding Leads and the Safeguarding Team meets with the Manager, Leads and School staff on a monthly basis. A Safeguarding form was developed in 2009 for all concerns regarding Poplar clients. These forms are now regularly used and copied to the Safeguarding Team. The Crisis team now also routinely use these forms and works effectively with the Safeguarding Team.

Audit Programme - Safeguarding Children Audit Programme

A number of Audits for the Safeguarding Children service have taken place in 2010. The Audit of Safeguarding Awareness amongst practitioners throughout the Trust was completed in June 2010 and demonstrated continued improvements in the level of awareness of key safeguarding information amongst staff.

In June 2010 the Audit of Referral Standards was also completed and demonstrated that referrals sent by SEPT staff in Bedfordshire and Luton to Local Authority children's social care teams were of an acceptable standard; however some areas for development were identified. An action plan was developed and has been monitored through the Safeguarding Group, with outstanding actions incorporated into the Group's action plan.

In January 2011 an audit of adherence to the requirements of the Child and Adolescent Mental Health Service (CAMH) operational policy with regard missed appointments was undertaken and the findings of this audit largely demonstrated that appropriate actions are being taken when initial and follow-up appointments are missed by service users.

Serious Case Reviews (SCR) Audit

The Trust has completed a number of audits following the recommendations from SCR's. All audits have been submitted and accepted by the LSCB's and include:-

- Evidence that practice has improved following training
- Safeguarding Supervision
- Record Keeping and storage
- Process of feedback to staff and teams involved in a SCR
- Process for those children who DNA appointments

In October 2010 External auditors on behalf of one LSCB, audited the Trust response and action plans following a SCR on a baby. The auditors concluded that 'SEPT has effective arrangements in place to address the issues arising from SCR's'.

NICE recommendations Child Maltreatment (979) Audit

NICE issued guidance in 2009 to improve child protection by promoting early recognition of suspected maltreatment within the NHS. The aim of the guidance was to raise awareness of the clinical features associated with maltreatment and the possibility of it. As a result the Trust became a NICE Stakeholder.

Child Protection Referrals Audit

An audit was undertaken within CAMHS teams in Essex to explore Child Protection Referrals to Children's Social Care and their outcomes. The results of this audit were reported to the Safeguarding Group meeting in January 2011. Five recommendations have been made from this audit to ensure that staff in CAMH are adhering to the requirements of the SEPT Safeguarding Children Policy and multi-agency guidance.

Serious Case Reviews (SCR)

An annual report on SCR was submitted to the Trust Executive Team in June 2010 and gave a detailed overview of SCR, the impact on SEPT and the actions taken. In March 2010 the Department for Children Schools & Families (DCSF) published the updated process for SCR in the *Working Together to Safeguard Children 2010* Document. Until June 2010 LSCB were expected to publish an Executive Summary of each SCR on their website. However the new Government in office has issued revised guidance and from June 2010 all new SCR will publish the Full Overview Report on their websites. To date there have been no new SCR tabled within the Trust area for Trust clients. Ofsted maintains the responsibility for evaluating the LSCB Overview Report, Executive Summary and

agency's Individual Management Reviews (IMR). Ofsted measures reports against a set of grade descriptors as either, *Outstanding, Good, Adequate, or Inadequate* (Table 3).

In 2009/10 there were 11 new SCR within the LSCB areas for Bedfordshire, Luton, Southend, Essex and Thurrock; 5 cases which occurred prior to 2009 continued to be active in 2009/10 as per Table 3.

Table 3: SCR 2010/11

Area	Total no. SCR	Trust IMR required	Ofsted Grading for SEPT IMR
Southend	2	1	Good
Essex	8	1	Good
Thurrock	3	1	Pending
Luton	2	0	N/A
Bedford	0	0	N/A
Central Beds	1	0	N/A

The Trust is expected to raise awareness of the learning identified in every SCR regardless of Trust involvement. As a result, the Safeguarding Intranet site regularly contains a 'Lessons Learned' section involving a SCR.

Forward Plans

The Trust Safeguarding service will continue to develop and improve services for clients. The forward plan focuses on key areas which will be integrated into the Safeguarding Group action plan and monitored monthly for compliance. The plan includes:

- Completing all domains outlined in the Safeguarding Service Strategic Plan for 2011
- Implementing a single Safeguarding Database across the Trust
- Update the Training programme in accordance with National & Local protocols
- Continue to improve the percentage of staff accessing training
- Ensure there are robust Safeguarding links within the Datix system.

Conclusion

This annual report seeks to inform the LSCB about the Trust's continued commitment to strengthening arrangements for Safeguarding Children.

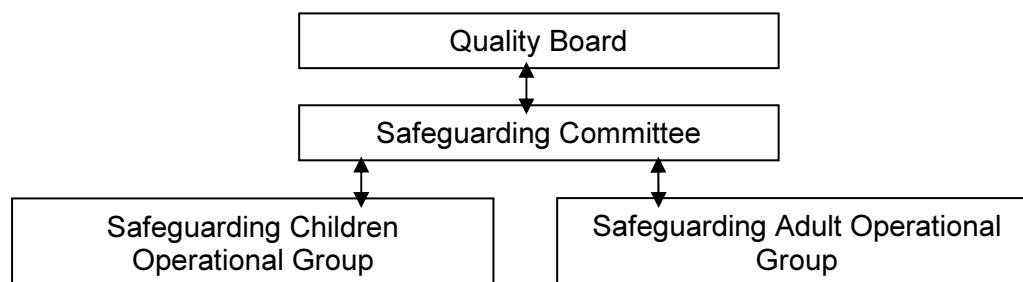
Bedford Hospital

1. ANNUAL REPORT SAFEGUARDING VULNERABLE PEOPLE

This is the first report covering both Safeguarding Children and Young People with Safeguarding Vulnerable Adults. The report reviews progress, compliance and gaps in the last financial year of both groups and details the activity in Q4.

1.1 CHANGES IN GOVERNANCE STRUCTURES:

Robust governance arrangements for safeguarding children and young people will inform both the continuation of those governance structures and sharing of experiences to enhance the Safeguarding Vulnerable Adults agenda across the trust. There is now an established Trust wide Safeguarding Committee chaired by the executive lead for safeguarding. Reporting to this Committee are two operational groups: Safeguarding Children Operational Group and the Safeguarding Adult Operational Group. Terms of reference are agreed.



1.2 SAFEGUARDING CHILDREN AND YOUNG PEOPLE ANNUAL REPORT- May 2011 Progress and activity overview 2010/11

Policy and processes

- Renewed Safeguarding Children Policy in line with 'Working Together 2010' to include procedural guidelines for Paediatrics, A&E, Maternity and Adult Services.
- Training Strategy updated in line with 'Working Together 2010'
- Developed, implemented and audited the flow chart for children who miss appointments.
- Local Child Death Overview Panel (CDOP) policy and accompanying resource pack.
- Information sharing agreement with Local Authorities supporting the 'flagging' process (Laming 2009). Updated annually and reviewed quarterly via multi-agency quality monitoring.
- Increase in number of referrals to Safeguarding Children Team as a result of raised awareness through attendance at training.

Staffing

- Developed and embedded Paediatric Safeguarding Liaison Post (PSLN). Pump prime money finished, post re-evaluated as effective so continues within Paediatric Staffing establishment.
- Deputy Named Nurse now a substantive post 0.6WTE.

A&E systems

- Successful development of the relationship between PSLN and 0-19 teams.

Governance

- Continue to have robust governance arrangements through the Trust Wide Safeguarding Committee and the Safeguarding Children Operational Group.

Audits

- Several Audits completed in line with 'Working Together 2010'.

Training

Implemented Training Strategy based on NICE guidance and Scenarios. Impact on outcomes measured by increase of appropriate referrals and expressed increase in staff knowledge and confidence (evidenced in evaluation).

2. SAFEGUARDING CHILDREN AND YOUNG PEOPLE Q4 REPORT

2.1 Introduction

The following are the key performance indicators derived from the latest government reports and guidance. The Trust has approved systems and processes in place to safeguard children that come into contact with the hospital. Trust staff work well within a multiagency context to safeguard and promote the welfare of children and young people. To ensure that these systems and processes are embedded and working there will now be a focus on auditing their effectiveness. This will provide the assurance that systems and processes are effective and safe.

2.1.1 Key performance Indicators:

- Quality Assurance
- Training
- Clinical supervision
- Audits

2.2 Quality Assurance

Operational processes to meet Laming recommendations (2009), CQC (2009) and Working Together (2010)

The **outstanding** issues from the above report and guidance are contained within the following table:

Issue	Update	Timescale	By Whom	Outcome
The flag for Child protection plan in place can be missed by reception staff in A&E due to the background colour being the same as the flag.	Flag is recorded on iPMS. Not able to be printed out on CAS card to be given to the clinicians On the risk register and IT have been asked to address these issues. The lack of iPMS 'talking to' extramed has been upward reported by Information Governance Committee	July 11	IT/iPMS manager	As yet unresolved
Record child's school on print out of the CAS card from PiMS	On the risk register and IT have been asked to address these issues. The lack of iPMS 'talking to' extramed has been upward reported by Information Governance Committee			
Feedback from Social Care following a referral.	Referring health professional/Named Nurses chasing social care Safeguarding liaison nurse supports this process	Reviewed quarterly	Named Nurse and Deputy	Reported on at Quarterly meetings with LA's
Automatic referral in special circumstances	Policies in place, referral made when there are known drug and/or alcohol abuse, domestic abuse, mental illness that may impact on children in the home	September 2011	All	Audit to be planned

All patients asked about dependants on admission	Space on the admission forms to record this, training to be reviewed and practice to be audited.	Sep 2011	All	Audit planned by Safeguarding adult team
--	--	----------	-----	--

2.3 Training

2.3.1 Numbers of staff with up to date training

Attendance at training is recorded on a rolling year plan. Additional efforts have been focused on increasing attendance in groups 2 and 1, whilst maintaining vigilance with staff in groups 3, 4, 6 who work directly with children.

Staff groups in Working Together (2010)	% in date with their training
4 Those who have particular specialist child protection responsibilities	100%
6. Operational Managers of services for children, young people and/or parents/carers	100%
3. Those who work predominantly with children, young people and/or parents/carers	79%
7. Senior managers responsible for strategic management of services for children, young people and/or parents/carers	100%
2. Those in regular contact or have a period of intensive but irregular contact with children, young people and/or parents/carers	61%
1. Those who have infrequent/occasional contact :	76%

Particular focus is on the Group 2 medical staff to increase their attendance at training.

2.4 Safeguarding Supervision Internal and external systems in place

External supervision is accessed by the Named professionals within the Trust, currently from the designated office in NHS Bedfordshire and the named Doctor is seeking external supervision.

Internal supervision, consisting of support and challenge, is offered by the Named professionals for all staff in the Trust involved in any child or young person about whom there is a safeguarding concern. This has been accessed by some staff and happens informally. Training for the named professionals has occurred this year.

2.5 Audits

2.5.1 Internal Clinical Audit plan

Completed audits:

- Schools to include documentation of home educated children
- Flags identified by A&E
- Feedback received by hospital from Social care

Planned audits:

- Record keeping, to include personalised care plans agreed with parents documented in the notes and completeness of the Information Sharing Forms
- No child about whom there is a concern not to be discharged without consultant approval
- DNA follow up (CQC Ch 3)
- Recording of all in-patient's dependants on admission

To be planned audits:

- **Automatic referral** where domestic violence or drug or alcohol abuse or mental ill health may put a child at risk of abuse or neglect (**Laming 2009, 4.4, recommendation 20**)

Resulting action plans from audits to complete the activity: For each audit there will be actions that will be incorporated into the Trust's Safeguarding Children work plan, monitored at the operational group, reported to The Trust Wide Safeguarding Committee, Business Unit Quality Boards and in the Quarterly updates to the Trust Board

2.5.2 External Audits/Inspections

Prepare for external audit/inspection by CQC/Ofsted

- CQC will carry out a number of unannounced inspection visits.
- Evidence for imminent announced inspection of Safeguarding Children with a 'Looked After Children' focus submitted March 2011. Date of inspection is awaited. Interview candidates and focus groups prepared.

2.6 KEY ISSUES for Children and Young People agenda taken forward into 2011/12 are:

2.6.1 Quality Assurance:

- Audit is required to ensure that the systems and processes developed over the last year are working and embedded into everyone's practice.
- Monitor the capacity to attend increased meetings of the Quality and Audit sub group of the LSCB.
- Prepared for upcoming external inspections including Looked After Children CQC/Ofsted.

2.6.2 Training:

- Expand pool of scenarios to be used in training.
- Audit staff Safeguarding Children competencies in order to evaluate training effectiveness.
- Capturing Group 2 medical staff

2.6.3 Internal Audits to be carried out this year identified, report recommendations at audit or Business Unit Quality boards and ensure action plans are monitored until completed.

Appendix 10: Safeguarding Outturns April 09 – March 2010

	National Average year end 31/03/10	Statistical Neighbours year end 31/03/10	CBC year end 31/03/09	CBC year end 31/03/10	% change - year on year 31/03/09 to 31/03/10	CBC Provisional Outturn 31/03/11	% change periods ending 31/03/10 to 31/03/11
No of contacts	N/A	N/A	5230	5835	+ 11.5%	7898	+ 35.4%
No of Referrals	3080	2450	1290	1744	+ 35.2%	2802	+ 60.7%
Conversion Rate Contact to Referral	N/A	N/A	24.7%	29.9%	+21.1%	35.5%	+ 18.7%
No of s 47 enquiries	448	N/A	284	397	+ 39.8%	506	+ 27.5%
No of initial assessments	1994	1427	1074	1190	+ 10.8%	1574	+ 32.3%
No of core assessments	722	575	635	738	+ 16.2%	935	+ 26.7%
No subject to cp plans	182	151	108	169	+ 56.5%	178	+ 0.5%
No of children subject to an ICPC	220	N/A	154	182	+ 18.2%	217	+ 35.0%
Children Looked after	329	258	134	163	+ 21.6%	175	+ 7.4%
Children starting to be Looked after	142	110	54	97	+ 79.6%	80	- 17.5%

Note: National and Statistical Neighbour averages are adjusted to represent Central Bedfordshire's 0-18 size. Contacts are not reported nationally, a recent study conducted by ADCS estimated a national increase of 10.4% between Q3 08/09 and 09/10.

Appendix 11: Partner member's attendance at Strategic Board meeting 2010 - 2011

Membership

Independent Chair
 Central Bedfordshire Council Children Social Care
 NHS Bedfordshire
 Bedfordshire Police
 Bedfordshire Police Authority
 Bedfordshire Probation Trust
 CAFCASS
 Central Bedfordshire Council Adult Social Care
 Lead Member for Children's Services
 Voluntary sector

Partner member attendance at CBSCB Strategic Board meetings

Central Bedfordshire Safeguarding Strategic Board 3 meetings April 2010 - March 2011

Name	AGENCY/ ORGANISATION	NUMBER OF MTGS	NUMBER PRESENT	NUMBER ABSENT	APOLOGIES	COMMENT
Alison Harding	Bedfordshire Probation	3	3			
Andrew Morgan	NHS Bedfordshire	3	1			Left NHS Bedfordshire in September 2010
Andrew Richer	Bedfordshire Police	3	1	1	1	In post from July 2010
Angela McNab	NHS Bedfordshire	3	0			In post from November 2011 & represented once
Anne Murray	NHS Bedfordshire	3	1			Represented twice
Catherine Parry	Central Bedfordshire Council	3	1			In post from March 2011
Cllr Anita Lewis	Central Bedfordshire Council	3	2	1	1	

Ed Thompson	Central Bedfordshire Council	3	1	2	2	Represented once
Edwina Grant	Central Bedfordshire Council	3	3			
Emily White	Central Bedfordshire Council	3	1	1	1	Deputy for Ed Thompson
Helena Hughes	NHS Bedfordshire	3	1			Deputy for Angela McNab & Anne Murray
John Fletcher	Bedfordshire Police	3	1			In post until July 2010
John Williams	Police Authority	3	1			In post from November 2010
Linda Bulled	VOCyfp	3	3			
Maggie Blyth	Independent Chair	3	3			
Mark Southwood	VOCyfp	3	0			Deputy for Linda Bulled
Mark Wheeler	Central Bedfordshire Council	3	2			In post from July 2011
Martin Pratt	Central Bedfordshire Council	3	1	N/A	N/A	In post until June 2010
Nigel Stone	Bedfordshire Police	3	2	N/A	N/A	Deputy for Andrew Richer
Sally Stocker	CBSCB Business Team	3	3			
Sue Ioannou	Central Bedfordshire Council	3	1			Nominated to attend in 2011

Appendix 12: Income for 2010/2011

AGENCY	CONTRIBUTION (£'S)
Bedford Borough Council	£55,000
Central Bedfordshire Council	£55,000
Bedfordshire Police	£26,634
Bedfordshire Probation	£8,378
NHS Bedfordshire	£73,549
CAFCASS	£550
Under spend from 2009/10	£7,361
Grand total	£226,272

Appendix 13: Protocol agreement between Central Bedfordshire Children and Young People's Trust Board and Central Bedfordshire Safeguarding Children Board

Central Bedfordshire Children's Trust Board

The Trust Board is a statutory strategy development body, which promotes strong joint planning and effective commissioning of services. It is responsible for developing and promoting a child and family-centred, outcome-led vision for all children and young people via the Children and Young People's Plan. The plan identifies the Trust's priorities for children and young people, clearly informed by their views and those of their parents/carers and a comprehensive needs analysis. The Trust Board monitors performance on its priorities at a high level and is responsible for putting in place robust arrangements for inter-agency governance.

The Children's Trust Board will:

- Consult the Central Bedfordshire Safeguarding Children Board (CBSCB) on issues, which affect how children are protected and their welfare promoted.
- Take note of recommendations and identified areas for improvement made by the CBSCB and report back to the CBSCB on subsequent progress
- Ensure the CBSCB is formally consulted during the development of the Children and Young People's Plan
- Invite the Chair of the CBSCB to attend the Children's Trust Board meetings
- Ensure that messages and information provided by the CBSCB are appropriately disseminated within Trust Board member organisations
- Receive and respond to the CBSCB's annual report to the Children's Trust Board
- Take an overview of the CBSCB's activities as part of its monitoring arrangements, as the work of the CBSCB falls within the framework of the Children & Young People's Plan.

Central Bedfordshire Safeguarding Children Board

The role of CBSCB is to co-ordinate the safeguarding activities of its partner agencies and to evaluate the effectiveness of what they do. Its functions are strategic and not operational. However it would expect to initiate activities which investigate and improve practice in child protection. It has the authority to call any agency represented on the Trust to account for its safeguarding activity.

The CBSCB and its activities are part of the wider context of children's trust arrangements. It contributes to the wider goals of improving the well being of all children whilst being primarily focused on the 'staying safe' element of the five Every Child Matters outcomes. Within the wider governance

arrangements its role is to ensure the effectiveness of the arrangements made by individual agencies and the wider partnership to protect and promote the welfare of children.

The CBSCB will:

- Take responsibility for monitoring actions to improve child protection, including action plans arising from Serious Case Reviews feeding back learning and undertaking audits to ensure that lessons have been learned.
- Feed back results from the above activities to the Children's Trust Board, advising on ways to improve and highlight areas of underperformance
- Ensure through regular evaluation that partner agencies comply with the duty to discharge their functions having regard to the need to protect and promote the welfare of children (Children Act 2004, s.11).
- Hold the Children's Trust Board to account on matters of child protection in all its activities, providing appropriate challenge on performance and results of performance indicators
- Initiate the development, regular review and active dissemination to all partner agencies of good practice Protocols to inform and assist multi-agency working
- Highlight gaps in service for the Children's Trust to consider as part of its joint commissioning process
- Provide six monthly reports on its findings from its scrutiny activity to the Children's Trust Board, including the annual report.
- Invite the Lead Member to attend the CBSCB Executive as a participant observer.

Both organisations will

- Have an ongoing and direct relationship, communicating regularly.
- Work together to ensure action taken by one body does not duplicate that taken by another.
- Ensure they are committed to working together to ensure there are no unhelpful strategic or operational gaps in policies, protocols, services or practice.

Appendix 14 - Glossary of Terms

CBSCB	Central Bedfordshire Safeguarding Children Board
BBSCB	Bedford Borough Safeguarding Children Board
LSCB	Luton Safeguarding Children Board
CDOP	Child Death Overview Panel
SCR	Serious Case Review
CTB	Children's Trust Board
WT	Working Together
CBC	Central Bedfordshire Council
BBC	Bedford Borough Council
LBC	Luton Borough Council
NHS	National Health Service
NSPCC	National Society for the Prevention of Cruelty to Children
MARAC	Multi-agency Risk Assessment Conference
SOVA	Safeguarding of Vulnerable Adults
DCS	Director of Children's Services
BCHS	Bedfordshire Community Health Services
CAF	Common Assessment Framework
MAAG	Multi Agency Allocation Group
SEPT	South Essex Partnership Trust
SHA	Strategic Health Authority
LA	Local Authority
ECM	Every Child Matters
LADO	Local Authority Designated Officer
ICS	Integrated Children System (Care First)
PVI Sector	Private Voluntary and Independent Sector
CYPP	Children and Young People's Plan
YOS	Youth Offending Service
KPIs	Key Performance Indicators